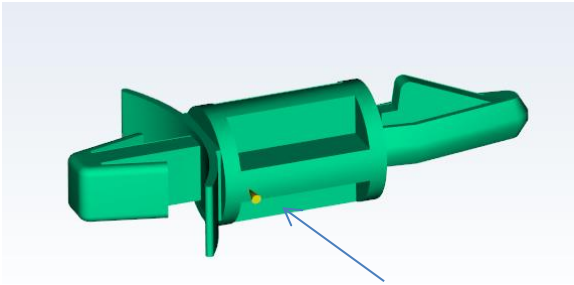


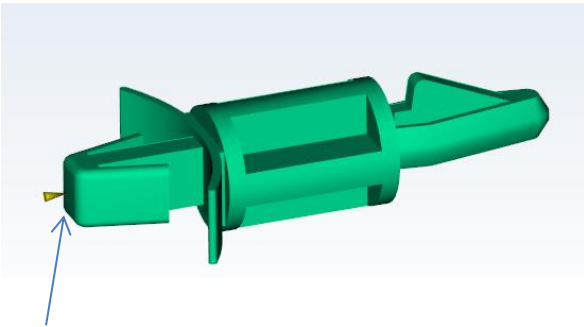
Molding Window

Model: PushFit

Tasks: Evaluate the gate location selection



| Injection location Body | | Studies |
|-------------------------|----------|---------------------------|
| X: | (10.696) | 1. Pushfit (A: Body gate) |
| Y: | 9.5 | 2. Pushfit (B: End gate) |
| Z: | 3.7 | |



| Injection location End | |
|------------------------|-----|
| X: | 7.1 |
| Y: | 0 |
| Z: | 3.5 |

Material Data:

Training Materials : Training PP 10 Unfilled

| Table 8 Pushfit | Mold Temperature °C | Melt Temperature °C | Injection Time s |
|---|---------------------------|---------------------------|------------------------|
| 1. Material recommended processing conditions | | | X |
| 2. Pushfit Body Gate (from Summary panel) | | | |
| 3. Pushfit Body Gate, injection time range, Zone plot | X | X | |
| 4. Pushfit End Gate (from Summary panel) | | | |
| 5. Pushfit End Gate , injection time range, Zone plot | X | X | |